

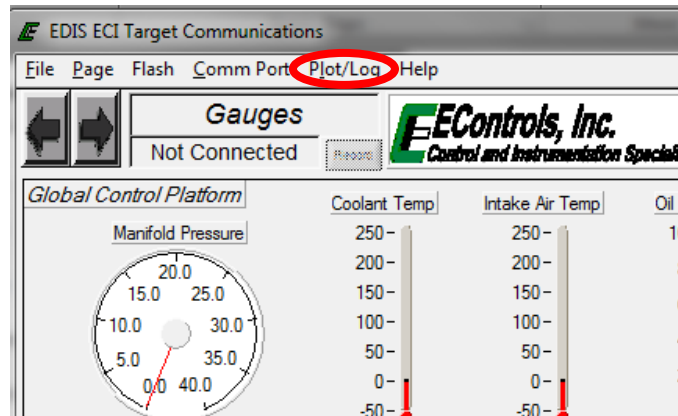
How to Plot with the GCP/4G Display

Plotter, Latest GCP Display Version 255A

Link to latest Version of GCP Display Software

<http://edidist-public.sharepoint.com/SiteAssets/gcp-documents/GCP-4G-FPP%20CD.zip>

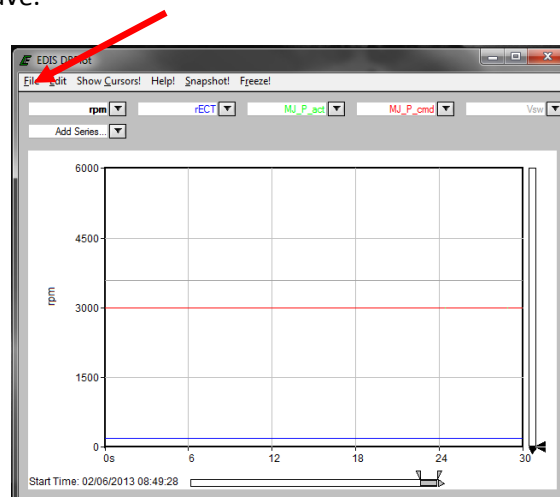
If provided with a plot template(.bplt file) to load into the GCP Display, connect to the engine, go to “Plot/Log” drop down menu and select “Load Recorder Settings” and select the file. This will automatically tag the variables for plotting.



If you were not provided a plot template, connect to the GCP display and tag the variables for plotting by right clicking over the variable. When it is tagged it will be highlighted green.

Now that your variables are tagged go to the "Plot/Log" drop down menu again. Select “Plot Tags”.

The plot will automatically begin, run the engine and simulate the issue. Once completed, click File in the plot window and click save.



The .bplt file saved can be viewed with the edis_sadbplt software that was installed with the GCP display.